



PROPOSAL AND CONTRACT (WHEN EXECUTED)

INSTRUCTIONS ATTACHED

THIS PROPOSAL INCLUDES INSTRUCTIONS TO BIDDERS

A. DEPOSIT OF PROPOSALS.

All envelopes containing Bid proposals shall be clearly marked "Bid Proposal for letting of June 12, 2024 ." DATE

Wesleyville Borough MUNICIPALITY (NAME & TYPE)

Marcus A. Jacobs Manager

Sealed Proposals will be received on or before 4:00pm on the above Letting Date. TIME

3421 Buffalo Road Erie, PA 16510 ADDRESS

Bids will be opened and read at approximately 6:00pm , on the above Letting Date. TIME

PROPOSALS MUST BE MAILED OR OTHERWISE DELIVERED TO THE ABOVE ADDRESS.

- 1 The contractor proposes to furnish and deliver all materials (including Form CS-4171, CERTIFICATE OF COMPLIANCE and/ or TR-465 DAILY ASPHALT MIXTURE CERTIFICATION) and to do and perform all work on the following project as more specifically set forth in the Schedule of Prices (Attachment), in accordance with drawings and specifications on file at Wesleyville Borough as well as the supplements and special requirements contained herein and/ or attached hereto and current PennDOT Specifications (Publication 408), except (a) bidders need not be prequalified by PennDOT (Sec.102.01), and (b) Volumetric testing of bituminous paving materials is not required (Sec. 409).
2 If designated as the successful bidder, the contractor will begin work on the date specified in the notice to proceed, or as otherwise provided in the special requirements, and will complete all work within see attachment 1-A calendar days.
3 Accompanying this proposal is a certified check or bid bond in the amount of 10% made payable to the municipality as a proposal guarantee which, it is understood, will be forfeited in case the contractor fails to comply with the requirements of the proposal.

B. PROPOSAL OF:

Three horizontal lines for contractor name and address.

NAME / ADDRESS OF CONTRACTOR

CONTRACTORS CERTIFICATION

It is hereby certified as follows:

- 1 The only person interested in the proposal as principal (s) is (are):
2 None of the above persons are employees of the municipality.
3 This proposal is made without collusion with any other person, firm or corporation.
4 All plans and specifications referred to above and the site of the work have been examined by the contractor. The contractor understands that the quantities indicated herein are approximate and are subject to change as may be required; and that all work is payable on the basis of the unit price listed on the Schedule of Prices. (Attachment 1).

- 5 The contractor will comply with all requirements of the laws and implementing regulations of the Commonwealth of Pennsylvania and the United States relating to human relations, equal opportunity and non-discrimination in employment, and will pay to workmen employed in the performance of the contract the wages to which they may be entitled.

- 6 The contractor will provide the municipality with a performance bond, conditioned upon the faithful performance of the contract in accordance with the plans, specifications and conditions thereof, and a payment bond, conditioned on the prompt payment of all material furnished and labor supplied or performed in the prosecution of the work, in accordance with the Public Works Contractors' Bond Law of 1967; and an affidavit accepting the provisions of the Workmen's Compensation Act of 1915, as amended.

CONTRACTOR

BY: _____ **DATE:** _____
TITLE:

WITNESSED OR ATTESTED BY: _____ **DATE:** _____
TITLE:

TO BE EXECUTED ONLY IN THE EVENT THE ABOVE PROPOSAL IS ACCEPTED

ACCEPTED ON : _____
DATE

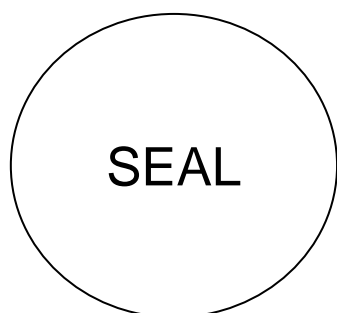
MUNICIPALITY

BY: _____
TITLE:

BY: _____
TITLE:

BY: _____
TITLE:

ATTESTED BY: _____
TITLE:





ATTACHMENT 1

TO MS - 944 (PROPOSAL AND CONTRACT MS - 944)

County: Erie

Municipality: Wesleyville Borough

Project Number: 24-25416-003

LOCATION OF WORK:

Road	From	To	Length	Width	SY	ADA	
Idlewood Dr.	Market St.	Water St.	280	18	560	5	
Willow St.	Fremont Ave.	SR 0020	650	30	2167	None	
Gray Ave.	Eastern Ave.	Willow St.	520	30	1733	None	

DESCRIPTION OF WORK:

ESCALATOR CLAUSE:(if adopted by Municipality.)

N/A

SCHEDULE OF PRICES					
1 Item No.	2 Approximate Quantities	3 Unit	4 *Description	5 Unit Price	6 Total
Base Bid					
1	12	Each	ADA Ramps (Design/Build)		
2	2	Each	Standard Inlet Box, Height <= 10', Special		
3	2	Each	Type C Frame and Bicycle Safe Grate		
Base Bid Amount					

***DESCRIPTION:**

Must include ADT on wearing surfaces.

USE OF CUTBACK ASPHALT IS PROHIBITED BETWEEN MAY 1ST AND OCTOBER 31ST, EXCEPT AS NOTED IN BULLETIN NO 25.

**SPECIAL PROVISIONS TO CONTRACT MS-944 (Attachment 1-A) - PAGE 1 OF 2
CONTAINS IMPORTANT INFORMATION FOR THE CONTRACTOR**

The Prime Contractor and subcontractors must comply with all of the following provisions that are marked with an "X".

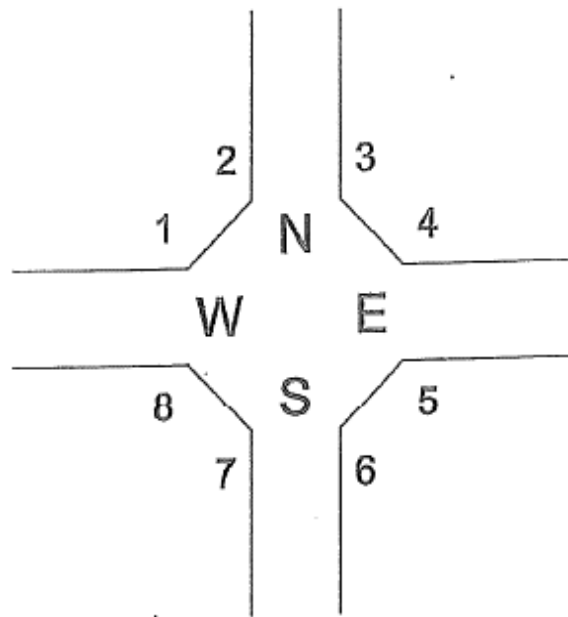
- This Proposal and Contract is made under, subject to, and governed by Specification 408/2020, Change #8, effective April 12, 2024, of the Pennsylvania Department of Transportation.
- Traffic Control and Safety Devices to be provided by the contractor. (Maintenance and Protection of Traffic to comply with current MUTCD, PennDot Publication 212 and Penndot Publication 213).
- Contractor NOT required to review proposed project with municipality's representative prior to bidding. Contact Marcus Jacobs regarding any questions.
- The municipality reserves the right to eliminate items of work.
- The lowest responsible bidder must comply with the Public Works Employment Verification Act by submitting a Commonwealth Public Works Employment Verification Form to the Public Body prior to award of Contract. The form and relevant information is attached with the Bid Package. Return completed form with submitted bid package.
- Contractor to supply proof of CDL Drug and Alcohol Compliance upon award of the bid.
- Contractor to provide Asphalt Quality Control Plan (Form CS-409) and all Asphalt Mix Designs (Form TR-448A) to the municipality 5 days prior to start of work.
- Notify the municipality 5 working days prior to the start of physical work.
- No restrictions on when physical work can begin.
- No work on observed holidays.
- No work permitted on weekends unless authorized by the municipality.
- Work to be completed on or before August 16, 2024. Liquidated damages apply at the rate of \$975.00 per calendar day after this completion date.
- Prevailing wages apply if contract exceeds \$100,000.00.
- Contractor required to notify all residents of pending work to be performed.
- Contractor must receive authorization from municipality if the anticipated work is to exceed 100% of planned quantity.
- The municipality is responsible for the inspection of the project. If the municipality's representative is not on site, it is the responsibility of the contractor to contact the municipality for any questions or concerns that may arise during construction. Failure to do so, may result in "no payment" for the area in question.
- Incidental preparation and clean up required (Project Construction Materials). Excess material to be removed by the contractor.
- n/a Contractor will retain asphalt millings except 450 Tons. Contractor responsible for delivering the millings to XXXXXXXXX. Contractor responsible for coordinating delivery and whether the contractor is responsible for providing a loader and operator to stockpile the material if directed by the municipality.
- n/a Saw cut or milled paving notch required at abutting pavement which includes intersecting roads and paved driveways (considered incidental to paving item).
- Asphalt tack coat (NTT/CNTT) required for each paving course (considered incidental to paving item).
- n/a Scratch/Leveling Courses to be placed at the discretion of appointed inspector(s).
- n/a Full width pavement with one pass required.
- Asphalt material to be accepted by certification.
- n/a Compaction to be accepted by Optimum Rolling Pattern. Contractor to complete Optimum Rolling Pattern for Asphalt Density Acceptance by Nuclear Method, Form TR-4276B, and provide a copy to the municipality.
- Asphalt seal required on all abutting pavement (including asphalt driveways) , new centerline longitudinal pavement joints, along existing concrete curbs, and around any inlets, manhole covers, water valves and gas valves (considered incidental to wearing item). Any inlet grates, manholes, and valve boxes sealed shut will be cleaned to the satisfaction of the municipality without any additional compensation to the contractor.

SPECIAL PROVISIONS TO CONTRACT MS-944 (Attachment 1-A) - PAGE 2 OF 2

- Contractor required to have approved sample bottles, bags, and boxes available if the municipality requests samples.
- All required documentation must be submitted to the municipality prior to any invoice payments. Required documentation are as follows: Asphalt Quality Control Plan, Mix Designs, Material Delivery Tickets, Material Certifications (CS-4171), Asphalt Bill of Lading(s), Tack Coat Bill of Lading, Optimum Rolling Pattern (TR-4276B), and the Notice of Completion (MS-NCP).
- Municipality Office Contact Information:
 - Contact Person: Marcus Jacobs
 - Day(s) office is open: Monday - Friday
 - Office Hours: 8:00am - 4:00pm
 - Phone Number: 814-899-9124
 - Email Address: marcus@wesleyville.gov
- Contractor responsible for defects that occur within one year from the date of the Notice of Completion.
- Future award of Contract will be based on quality of work as determined by the municipality.

Project Specific Special Provisions:

- n/a Item X to be used for base repair areas. Excavation and disposal of material considered incidental to tonnage. Item may be used any where on the project. Length and width will be determined by the municipality.
- Item 1: Contractor responsible for the design and construction of ADA ramps impacted by resurfacing of roads. Ramps must be in compliance with PennDOT RC Standards 64M and 67M. Sawcutting and removal/disposal of existing concrete (if applicable), asphalt roadway for formwork, grading and placement of Topsoil, Formula B Seed and Straw Mulch, Detectable Warning System (DWS), color must be approved by the municipality, and installation of Concrete Curb ALL considered incidental to Design/Build Item. ADA Ramp construction must be completed prior to placement of wearing course. Any asphalt base, binder, or wearing course required to be placed in front of newly constructed ramp, or other material approved by the Borough, is considered incidental.



ADA Ramp Locations

1.) Eastern Avenue/Edison Avenue - 1,2,3,4,5,6,7,8

2.) Eastern Avenue/Woodlawn Avenue - 1,2,3,4

Note: Location of ramps installed at the intersection of Eastern Avenue and Woodlawn must be designed to send pedestrians across Woodlawn Avenue in a perpendicular manner where future ramps will receive pedestrian traffic.

- 5 -

Item 2: Inlet locations will be on the Southeastern and Northeastern corners of the intersection of Eastern Avenue and Edison Avenue. Contractor responsible for removal and disposal of existing inlet box and grates. Any additional materials necessary to connect inlet box to existing pipe considered incidental to the inlet box. Inlet boxes will be in accordance with Penndot RC-45 and RC-46.

My signature signifies that I have read and understand the above special provisions to this contract, and by being authorized by this company to act as their authorized representative, and on their behalf hereby agree to adhere to any and all of the provisions pertaining to this contract.

Contractor's Representative Date

Municipality's Representative Date

Company

Municipality

- 6 -

PROPOSAL AND CONTRACT INSTRUCTIONS- FORM 944

- 1 The proposal must be typewritten or printed.
- 2 If more than one proposal on any project is submitted by an individual, firm or partnership, corporation or association under the same or different names, only one proposal, the lowest, will be considered.
- 3 Description of work—A. If additional space is needed, insert appropriately numbered attachment and note “Continued on attached work sheets”
- 4 Part A of Page 1 is to be completed by municipality. Part B of Page 1 to be completed by contractor. Schedule of Prices -Column #1 (Item) ,#2 (Approximate Quantities), #3 (Unit, i.e., ton, square yard, linear foot, etc.) and #4 (Description, i.e., bituminous materials -9.5mm S & L, 12.5mmWearing, 25.0mm Base Course, etc.) must be filled in by municipality to insure equitable bidding. Columns #5 (Unit Price), #6 (Total) and total amount of bid, must be filled in by the contractor. If more space is needed, add note at bottom of the page, “Continued on Attachment No. 1-A”; and add additional sheet designated as Attachment No. 1-A, 1-B, etc. Repeat for each additional sheet required. As required by Publication 408 (current edition), Section 102.06 (e), each bidder must submit a completed Form D-7126, Anti-Collusion Affidavit (included in this Form MS-944), with its bid proposal.
- 5 If liquidated damages are to be assessed, add the following sentence to Part A #2: “If all work is not completed on time, liquidated damages will be assessed at the rate of \$975.00 per additional working day.” (OR”... as set forth in the attached schedule”).
- 6 Only the successful bidder is obligated to provide payment and performance bonds. These bonds shall conform to the requirements of the relevant municipal code or charter and the Public Works Contractors’ Bond Law of 1967, Act of December 20, 1967, P.L. 869, No.385, 8 P.S. §§ 191—202. Bond forms are included in this Form MS-944 as Attachments 2 (performance bond) and 3 (payment bond). The successful bidder must submit the bonds and the Workmen’s Compensation Act Affidavit, Attachment 4, within 20 days of the contract award. Failure to submit the bonds shall constitute grounds to cancel the contract
- 7 If the estimated cost of a contract for “public work,” as this term is defined in the Pennsylvania Prevailing Wage Act, Act of August 15, 1961, P.L. 987, No. 442, as amended, 43 P.S. §§ 165-1—165-17, exceeds \$100,000.00 and the contract is paid for in whole or part out of the funds of the municipality, the municipality shall take the following actions: (1) Determine the prevailing minimum wage rates from the Department of Labor and Industry, Bureau of Labor Law Compliance. (2) Indicate in the advertisement issued for the purpose of securing bids for the contract that prevailing wage rates shall be paid on the project. (3) Specify the prevailing minimum wage rates in the bid proposals for the contract. On projects financed partly with federal funds, if the project cost exceeds \$2,000.00 and 25% or more of the funding comes from federal funds, the Davis-Bacon Act, 40 U.S.C. §§ 3141—3145, applies. Here again, it is the responsibility of the municipality to obtain the Davis-Bacon wage rates from the United States Department of Labor, Wage and Hour Division, which has offices in Philadelphia, Pittsburgh and Wilkes-Barre; include them in the proposal; and note the fact in the advertisement. If both acts are applicable, the Davis-Bacon Act preempts the Pennsylvania Prevailing Wage Act and applies to the entire project, not just the federally-funded components.
- 8 An ESCALATOR CLAUSE is optional; if used, it must be included in the proposal prepared by the municipality. An escalator clause may not be inserted by the contractor.

SECTION 605—ENDWALLS, INLETS, MANHOLES, AND SPRING BOXES

605.1 DESCRIPTION—This work is construction and/or cleaning of endwall, inlet, manhole, and spring box structures of the type indicated.

605.2 MATERIAL—

(a) Inlet Grates and Frames. As shown on the Standard Drawings, either structural steel, as specified in Section 1105.02(a)3.c, or gray, malleable, or ductile iron as specified in Section 1105.02(h). For Type M Frames, provide either structural steel as specified in Section 1105.02(a)2 or gray, malleable, or ductile iron as specified in Section 1105.02(h). Certify as specified in Section 106.03(b)3.

Coat structural steel grates with asphalt paint in the shop or in the field, before placement. Coat structural steel frames with asphalt paint when placing in the concrete inlet top. Cover frames and grates completely with no pin holes or voids. As an alternative to asphalt paint, hot dip galvanize structural steel grates and frames as specified in Section 1105.02(s).

(b) Manhole Frames and Covers. As shown on the Standard Drawings, either gray, malleable, or ductile iron, as specified in Section 1105.02(h). Machine-grind the metal-bearing contact areas to fit in pairs. Matchmark each pair with notches to ensure satisfactory seating.

(c) Manhole Steps. Certify as specified in Section 106.03(b)3. As shown on the Standard Drawings, conforming to the vertical design load and the horizontal pull out design load requirements of ASTM C478; and made of one of the following materials:

- Corrosion-resistant steel alloy bars containing 1.65% to 1.85% nickel and 0.8% to 0.9% copper, having a minimum tensile strength of 50,000 pounds per square inch and a minimum yield strength of 37,000 pounds per square inch, with a minimum elongation of 30% over a 2-inch gage length.
- Deformed Wire, according to ASTM A1064, Epoxy-Coated according to ASTM A934, encased in a copolymer polypropylene shell that conforms to ASTM D4101, Table PP, Group 03, Class 4, Table B Designation B44744.
- Deformed reinforcement bars, according to AASHTO M 31, Grade 40, galvanized after bending, according to ASTM A787.
- Deformed reinforcement bars, according to ASTM A615, Grade 60, coated with copolymer polypropylene plastic that conforms to ASTM D4101; Table PP; Group 03 Copolymer or Impact Modified; Class 2, 3, or 4; any of grades 1 through 9.
- Gray, malleable or ductile cast iron, as specified in Section 1105.02(h).
- Aluminum alloy according to ASTM B221, 6061-T6, 6005-T5, or 6351-T6, with a protective coat applied to the portion to be embedded in the concrete.
- Fiberglass-reinforced polyester, according to ASTM D2444 and D635.
- Fabricate manhole steps free from sharp edges, burrs, and hazardous projections.

(d) Precast Concrete Top Units for Inlet Boxes, Inlet Boxes, Manholes, Grade Adjustment Rings, Top Slabs, and Transition Slabs.

- Class AA Cement Concrete Modified – Provide cement concrete as specified in Section 704; except, with a minimum 28-day compressive strength of 4,000 pounds per square inch.

(e) Concrete Top Units for Inlet Boxes.

- Structural Steel Angles and Plates – Section 1105.02(a)2 galvanized after fabrication as specified in Section 1105.02(s)
- Welded Studs – Section 1105.02(e)1

(f) Other Material.

- No. 2A Coarse Aggregate – Section 703.2
- Class A Cement Concrete—Section 704
- Epoxy Bonding Compound – Section 706.1
- Reinforcement—Section 709
- Gaskets – Section 705.5
- Mortar—Section 705.6
- Caulking Compound – Section 705.7
- Precast Concrete Units—Section 714
- Concrete Curing Compounds—Section 711.2(a)
- Curing and Protecting Covers—Section 711.1
- Non-Shrink Grout – Section 1080.2(c)
- Asphalt Paint—According to AASHTO M140 (emulsified asphalt) meeting the requirements listed in Bulletin 25 and from a supplier listed in Bulletin 15, Section 702-EM. Certify as specified in Section 106.03(b)3.
- Zinc Chromate Primer—Federal Specification TT-P-645. Certify as specified in Section 106.03(b)3.

605.3 CONSTRUCTION—Before construction or fabrication, obtain acceptance of shop drawings, if required.

(a) Construction of Drainage Structures. Construct as indicated, as shown on the Standard Drawings, as shown on the accepted shop drawings, and as follows:

- Cement Concrete Structures—As specified in Section 1001.3.

Excavate for the structure as required.

Place No. 2A Coarse Aggregate and compact as specified in Section 350.3(e), if specified.

Place concrete foundations and walls monolithically, except if otherwise allowed.

Carefully remove existing castings that are to be reused. Clean and transport to the new location.

Construct new inlet or manhole walls and bottoms to accommodate the dimensions of the existing castings.

Set frames, concrete top units, and grade adjustment rings (if required for inlets and manholes) on a bed of non-shrink grout to provide full bearing on the supporting surface.

Set pipes in inlets and manholes, flush with the inside structure face. For pipes protected by end walls, set flush with the exposed structure face.

If constructing structures in conjunction with existing pipe culverts and drains, provide for satisfactory connections, as specified for new construction of a similar type.

Backfill excavated spaces around the structure, with acceptable embankment material, as specified in Section 206.3(b)4. Satisfactorily dispose of unsuitable and surplus materials.

Brick and Brick and Mortar are not allowed for grade adjustments.

Coat all aluminum surfaces to be embedded in concrete with one coat of zinc chromate primer, or a coat of asphalt paint. Allow to dry completely before placing concrete.

(b) Cleaning of Drainage Structures. Clean drainage structures, as indicated, including inlets, manholes, end walls, spring boxes, grates, and scuppers. Repair any damage resulting from the cleaning operations. Prevent material cleaned from structures from entering streams or other bodies of waters and dispose of this material in a satisfactory manner.

605.4 MEASUREMENT AND PAYMENT—

(a) Manhole. Each

The price for the manhole includes excavation, compacted No. 2A coarse aggregate, manhole, concrete for channel, transition slab, if required, top slab, if required, backfill, and any other miscellaneous items required for the construction of the manhole. The height is measured from the Finished Grade Elevation to the bottom of the bottom slab elevation.

(b) Manhole Frame and Cover. Set

The price includes frame, cover, and grade adjustment rings, if required.

(c) Reuse Existing Manhole Frame and Cover. Set

The price includes removing the existing frame and cover and installing the frame and cover on a new structure. Also includes grade adjustment rings, if required.

(d) Spring Boxes. Each

The price includes excavation, spring box, reinforcement, if required, backfill, and any other miscellaneous items required for the construction of the spring box.

(e) End Walls. Each

For the type indicated.

(f) End Wall Excavation. Cubic Yard

For the Class of excavation, as indicated.

(g) Grates. Each

(h) Concrete Top Units and Grates. Set

The price includes top unit, grate, and grade adjustment rings, if required.

(i) Concrete Top Units Using Existing Grates. Set

The price includes top unit and grade adjustment rings, if required.

(j) Frames and Grates. Set

The price includes frame, grate, and grade adjustment rings, if required.

(k) Frames Using Existing Grates. Set

The price includes frames and grade adjustment rings, if required.

(l) Inlet Boxes. Each

The price for the inlet box includes excavation, compacted No. 2A coarse aggregate, inlet box, concrete for channel, transition slab, if required, top slab, if required, backfill and any other miscellaneous items required for the construction of the inlet box. The height is measured from the Finished Grade Elevation to the bottom of the bottom slab elevation.

(m) Concrete for Miscellaneous Drainage. Section 601.4(c)

(n) Cleaning of Drainage Structures. Each
For the type indicated.

(o) Stormwater Basin Outfall Structure. Each
For the type indicated.

(p) Inlet Cap. Each

PERFORMANCE BOND (With Corporate Surety)



KNOW ALL MEN BY THESE PRESENTS, That we,

(NAME AND ADDRESS OF CONTRACTOR)

as Principal and _____
(SURETY COMPANY)

a corporation incorporated under the laws of the State of _____ as Surety
(NAME OF STATE)

are held and firmly bound unto _____ in the full and just sum of
(NAME OF MUNICIPALITY)

(\$ _____) dollars

lawful money to the United States of America, to be paid to the above Municipality or its assigns, to which payment well and truly to be made, we bind ourselves, our heirs, executors, administrators, successors and assigns, jointly and severally, firmly by these presents.

WHEREAS, the above bounden Principal has entered into a contract with the above Municipality, bearing even date herewith, for the undertaking of certain obligations as therein set forth.

NOW, THEREFORE, the condition of this obligation is such that if the above bounden Principal, as Contractor, shall in all respects comply with and faithfully perform the terms and conditions of said Contract, including the Specifications and conditions referred to and made a part thereof, and such alterations as may be made in said Specifications as therein provided, and shall well and truly, and in a manner satisfactory to the municipality fulfill all obligations as therein set forth, then this Obligation shall be void, but otherwise the same shall be and remain in full force, virtue and effect.

It is further provided that any alteration which may be made in the terms of the contractor or its specifications with the express approval of the Municipality or the Principal to the other, shall not in any way release the Principal and the Surety or either or any of them, their heirs, executors, administrators, successors or assigns from their liability hereunder, notice to the surety of any such alteration or forbearance being hereby waived.

IN WITNESS WHEREOF, the said Principal and Surety have duly executed this Bond under Seal, pursuant to due and legal action authorizing the same to be done on _____

(DATE OF BOND)



Attest / Witness:

CONTRACTOR

BY

TITLE:

TITLE:



Attest / Witness:

SURETY COMPANY

TITLE:

TITLE:



KNOW ALL MEN BY THESE PRESENTS, that we

[Redacted box]

as PRINCIPAL and _____ as SURETY, are held and firmly bond unto the _____, in the full and just sum of _____ (\$ _____) dollars, lawful money of the United States of America, to be paid to the said _____ or its assigns, to which payment well and truly to be made, we bind ourselves, our heirs, executors, administrators, successors and assigns, jointly and severally, firmly by these presents.

WHEREAS, the above bounden Principal has entered into a contract with the above municipality hereinafter called Obligee, bearing even date herewith, for the improvement of a certain section of highway or bridge in said Municipality consisting of:

_____ for approximately the sum of: _____ (\$ _____) dollars.

NOW, THEREFORE, the condition of this obligation is such that if the above bounden PRINCIPAL shall and will promptly pay or cause to be paid in full all sums of money which may be due by contract or otherwise, to any individual, firm, partnership, association or corporation, for all material furnished or labor supplied or performed in the prosecution of the work, whether or not the said for material or labor entered into and became component parts of the work and for rental of the equipment used and services rendered by public utilities in, or in connection with the prosecution of such work, then this obligation to be void, otherwise to remain in full force and effect.

The PRINCIPAL and SURETY, hereby, jointly and severally, agree with the Obligee herein that any individual firm, partnership, association or corporation, which has performed labor or furnished material in the prosecution of the work as provided, and any public utility which has not been paid in full therefor, may sue in assumpsit on this Payment Bond in his, their, or its own name and may prosecute the same to final for such sum or sums as may be justly due him, them or it, and have execution thereon. Provided, however, that the Obligee shall not be liable for the payment of any costs of expenses of such suit.

RECOVERY by any individual, firm, partnership, association or corporation hereunder shall be subject to the provisions of the "Public Works Contractors' Bond Law of 1967", Act No. 385, approved December 20, 1967, P.L. 869, which Act shall be incorporated herein and made a part hereof, as fully and completely as though its provisions were fully and at length herein recited.

It is further provided that any alterations which may be made in the terms of the contract or in the work to be done or materials to be furnished or labor to be supplied or performed under it or the giving by the Obligee of any extension of time for the performance of the contract or any other forbearance on the part of either the Obligee or the Principal to the other, shall not in any way release the PRINCIPAL and the SURETY or SURETIES of any such alteration, extension of forbearance being hereby waived.

IN WITNESS WHEREOF, the said PRINCIPAL and SURETY have duly executed this Bond under seal this _____ day of _____, 20____.



WITNESS:

CONTRACTOR

TITLE:

BY:

TITLE:



WITNESS:

SURETY COMPANY

TITLE:

TITLE:



AFFIDAVIT RE:

ACCEPTING PROVISIONS OF THE WORKMEN'S COMPENSATION ACT

State of Pennsylvania)
)
) ss:
)
County of _____)

being duly sworn according to law deposes and says that _____ accepted
the provisions of the Workmen's Compensations Act of 1915 of the Commonwealth of Pennsylvania, with its
supplements and amendments, and insured liability thereunder in accordance with the terms of said Act with
accepted the provisions of the Workmen's Compensation Act of 1915 of the Commonwealth of Pennsylvania, with

(SURETY COMPANY)

(TYPE OR PRINT) CONTRACTOR

BY _____
SIGNATURE

Sworn to and subscribed before me this ____ day of _____ A.D. 20 ____ .

SIGNATURE: NOTARY PUBLIC

My Commission Expires (DATE)

ANTI-COLLUSION AFFIDAVIT



County Erie

Municipality Wesleyville Borough

Project Number 24-25416-003

Fed. Project No. _____
(If Applicable)

State of _____

County of _____

The undersigned deponent deposes and says that they are th _____
 of the _____ (TYPE OR PRINT) _____ Company; that they are authorized to make this
 affidavit on behalf of said company in compliance with section 102.06 (e) of Department Specifications,
 Publication 408, as amended and that the said company has not, either directly or indirectly, entered
 into any agreement, participated in any collusion, or otherwise taken any action in restraint of free
 competitive bidding in connection with such contract.

 (TYPE OR PRINT)
 (Contractor)

BY

Sworn to and subscribed before me the undersigned notary public this

_____ day of _____, _____.

Notary Public

My Commission expires _____



Wesleyville Borough **MUNICIPALITY**

NOTICE OF COMPLETION

IN REFERENCE TO PROJECT # 24-25416-003

Name of Contractor _____

Performance of work as specified on the above numbered contract is completed and final pavement inspection has been made by the contractor and municipality in accordance with the terms of the contract awarded.

DATE OF AWARD _____

Signature of Municipality

Signature of Contractor

Both copies of this form to be filled by the Contractor-Municipality on completion of final pavement restoration.

THIS PORTION TO BE COMPLETED BY MUNICIPALITY

FINAL COMPLETION CERTIFICATE

By the affixing of my signature I hereby certify that final inspection has been made and all work has been performed in accordance with the above contract # and is hereby accepted by the municipality as completed.

Authorized Agent for the Municipality

*DATE _____

*** The contractor is responsible for maintenance of permanent pavement repairs for a period of one year from this date.**



COMMONWEALTH OF PENNSYLVANIA

PUBLIC WORKS EMPLOYMENT VERIFICATION FORM

Date

Business or Organization Name (Employer)

Address

City State Zip Code

Contractor Subcontractor (check one)

Contracting Public Body

Contract/Project No

Project Description

Project Location

As a contractor/subcontractor for the above referenced public works contract, I hereby affirm that as of the above date, our company is in compliance with the Public Works Employment Verification Act ('the Act') through utilization of the federal E-Verify Program (EVP) operated by the United States Department of Homeland Security. To the best of my/our knowledge, all employees hired post January 1, 2013 are authorized to work in the United States.

It is also agreed to that all public works contractors/subcontractors will utilize the federal EVP to verify the employment eligibility of each new hire within five (5) business days of the employee start date throughout the duration of the public works contract. Documentation confirming the use of the federal EVP upon each new hire shall be maintained in the event of an investigation or audit.

I, , authorized representative of the company above, attest that the information contained in this verification form is true and correct and understand that the submission of false or misleading information in connection with the above verification shall be subject to sanctions provided by law.

Authorized Representative Signature

**BUREAU OF LABOR LAW COMPLIANCE
PREVAILING WAGES PROJECT RATES**

Project Name:	ADA Ramp Project
General Description:	Install Inlet and ADA Ramps.
Project Locality	Wesleyville Borough
Awarding Agency:	Wesleyville Borough Council
Contract Award Date:	6/12/2024
Serial Number:	24-05229
Project Classification:	Heavy/Highway
Determination Date:	5/23/2024
Assigned Field Office:	Pittsburgh
Field Office Phone Number:	(412)565-5300
Toll Free Phone Number:	(877)504-8354
Project County:	Erie County

**BUREAU OF LABOR LAW COMPLIANCE
PREVAILING WAGES PROJECT RATES**

Project: 24-05229 - Building	Effective Date	Expiration Date	Hourly Rate	Fringe Benefits	Total
Asbestos & Insulation Workers	8/1/2022		\$39.36	\$28.51	\$67.87
Boilermakers	6/1/2014		\$40.90	\$26.16	\$67.06
Bricklayer	5/1/2022		\$31.24	\$23.16	\$54.40
Bricklayer	5/1/2024		\$34.49	\$23.81	\$58.30
Carpenters - Piledriver/Welder	1/1/2023		\$40.63	\$21.22	\$61.85
Carpenters - Piledriver/Welder	1/1/2024		\$42.13	\$21.97	\$64.10
Carpenters - Piledriver/Welder	1/1/2025		\$43.38	\$22.72	\$66.10
Carpenters - Piledriver/Welder	1/1/2026		\$44.63	\$23.47	\$68.10
Carpenters, Drywall Hangers, Framers, Instrument Men, Lathers, Soft Floor Layers	5/1/2023		\$34.37	\$17.89	\$52.26
Carpenters, Drywall Hangers, Framers, Instrument Men, Lathers, Soft Floor Layers	5/1/2024		\$35.92	\$17.89	\$53.81
Carpenters, Drywall Hangers, Framers, Instrument Men, Lathers, Soft Floor Layers	5/1/2025		\$37.47	\$17.89	\$55.36
Carpenters, Soft Floor Layers	5/1/2021		\$31.72	\$17.29	\$49.01
Cement Masons	5/1/2022		\$31.89	\$17.61	\$49.50
Drywall Finisher	5/1/2023		\$25.51	\$24.03	\$49.54
Drywall Hanger	5/1/2018		\$30.51	\$16.05	\$46.56
Electricians & Telecommunications Installation Technician	6/1/2022		\$34.25	\$27.73	\$61.98
Electricians & Telecommunications Installation Technician	6/1/2023		\$35.50	\$28.73	\$64.23
Elevator Constructor	1/1/2023		\$56.14	\$42.83	\$98.97
Elevator Constructor	1/1/2024		\$58.55	\$43.87	\$102.42
Glazier	6/1/2023		\$21.00	\$22.35	\$43.35
Iron Workers	6/1/2022		\$33.07	\$32.10	\$65.17
Iron Workers	6/1/2023		\$33.57	\$32.68	\$66.25
Laborers (Class 01 - See notes)	5/1/2023		\$24.84	\$20.02	\$44.86
Laborers (Class 01 - See notes)	5/1/2024		\$26.09	\$20.27	\$46.36
Laborers (Class 01 - See notes)	5/1/2025		\$27.34	\$20.52	\$47.86
Laborers (Class 01 - See notes)	5/1/2026		\$28.59	\$20.77	\$49.36
Laborers (Class 01 - See notes)	5/1/2027		\$30.09	\$21.02	\$51.11
Laborers (Class 02 - See notes)	5/1/2019		\$21.94	\$18.92	\$40.86
Laborers (Class 03 - See notes)	5/1/2023		\$25.49	\$20.02	\$45.51
Laborers (Class 03 - See notes)	5/1/2024		\$26.74	\$20.27	\$47.01
Laborers (Class 03 - See notes)	5/1/2025		\$27.99	\$20.52	\$48.51
Laborers (Class 03 - See notes)	5/1/2026		\$29.24	\$20.77	\$50.01
Laborers (Class 03 - See notes)	5/1/2027		\$30.74	\$21.02	\$51.76
Landscape Laborer (Skilled)	1/1/2023		\$23.79	\$18.28	\$42.07
Landscape Laborer (Skilled)	1/1/2024		\$24.79	\$18.53	\$43.32
Landscape Laborer (Skilled)	1/1/2025		\$25.79	\$18.78	\$44.57
Landscape Laborer (Skilled)	1/1/2026		\$26.79	\$19.03	\$45.82
Landscape Laborer (Tractor Operator)	1/1/2023		\$24.09	\$18.28	\$42.37
Landscape Laborer (Tractor Operator)	1/1/2024		\$25.09	\$18.53	\$43.62
Landscape Laborer (Tractor Operator)	1/1/2025		\$26.09	\$18.78	\$44.87
Landscape Laborer (Tractor Operator)	1/1/2026		\$27.09	\$19.03	\$46.12

**BUREAU OF LABOR LAW COMPLIANCE
PREVAILING WAGES PROJECT RATES**

Project: 24-05229 - Building	Effective Date	Expiration Date	Hourly Rate	Fringe Benefits	Total
Landscape Laborer	1/1/2023		\$23.37	\$18.28	\$41.65
Landscape Laborer	1/1/2024		\$24.37	\$18.53	\$42.90
Landscape Laborer	1/1/2025		\$25.37	\$18.78	\$44.15
Landscape Laborer	1/1/2026		\$26.37	\$19.03	\$45.40
Millwright	6/1/2020		\$41.68	\$20.32	\$62.00
Operators (Class 01 - see notes)	5/1/2022		\$32.10	\$19.79	\$51.89
Operators (Class 01 - see notes)	5/1/2023		\$32.75	\$20.69	\$53.44
Operators (Class 02 -see notes)	5/1/2022		\$31.43	\$19.79	\$51.22
Operators (Class 02 -see notes)	5/1/2023		\$32.08	\$20.69	\$52.77
Operators (Class 03 - See notes)	5/1/2022		\$27.25	\$19.79	\$47.04
Operators (Class 03 - See notes)	5/1/2023		\$27.90	\$20.69	\$48.59
Operators (Class 04 - Chief of Party (Surveying and Layout))	5/1/2023		\$28.92	\$20.69	\$49.61
Operators (Class 04 - Rodman/Chainman (Surveying and Layout))	5/1/2023		\$27.90	\$20.69	\$48.59
Operators (Class 04 - Surveying Instrument Man)	5/1/2023		\$28.19	\$20.69	\$48.88
Painters (Bridges, Stacks, Towers)	5/1/2020		\$25.87	\$19.95	\$45.82
Painters (Brush and Roller)(Commercial)	5/1/2023		\$25.26	\$24.03	\$49.29
Painters (Brush and Roller)(Commercial)	5/1/2024		\$26.37	\$25.42	\$51.79
Painters (Brush and Roller)(Industrial)	5/1/2022		\$24.79	\$22.75	\$47.54
Painters (Spray and Sandblasting)(Commercial)	5/1/2023		\$26.01	\$24.03	\$50.04
Painters (Spray and Sandblasting)(Commercial)	5/1/2024		\$27.12	\$25.42	\$52.54
Painters (Spray and Sandblasting)(Industrial)	5/1/2022		\$25.54	\$22.75	\$48.29
Painters Class 6 (see notes)	5/1/2020		\$23.62	\$19.95	\$43.57
Pile Driver Divers (Building, Heavy, Highway)	1/1/2023		\$58.70	\$21.22	\$79.92
Pile Driver Divers (Building, Heavy, Highway)	1/1/2024		\$60.95	\$21.97	\$82.92
Pile Driver Divers (Building, Heavy, Highway)	1/1/2025		\$62.82	\$22.72	\$85.54
Pile Driver Divers (Building, Heavy, Highway)	1/1/2026		\$64.70	\$23.47	\$88.17
Piledrivers	1/1/2023		\$39.13	\$21.22	\$60.35
Piledrivers	1/1/2024		\$40.63	\$21.97	\$62.60
Piledrivers	1/1/2025		\$41.88	\$22.72	\$64.60
Piledrivers	1/1/2026		\$43.13	\$23.47	\$66.60
Plasterers	6/1/2022		\$26.57	\$19.08	\$45.65
Plasterers	6/1/2023		\$32.14	\$20.54	\$52.68
plumber	6/1/2023		\$46.98	\$25.87	\$72.85
plumber	6/1/2024		\$50.08	\$25.87	\$75.95
plumber	6/1/2025		\$53.28	\$25.87	\$79.15
plumber	6/1/2026		\$56.38	\$25.87	\$82.25
plumber	6/1/2027		\$59.48	\$25.87	\$85.35
Pointers, Caulkers, Cleaners	12/1/2022		\$35.47	\$20.88	\$56.35
Pointers, Caulkers, Cleaners	6/1/2024		\$38.59	\$21.36	\$59.95
Roofers	5/1/2023		\$33.00	\$17.66	\$50.66
Roofers	5/1/2024		\$35.03	\$17.18	\$52.21
Sheet Metal Workers	7/1/2022		\$39.50	\$31.43	\$70.93
Sheet Metal Workers	8/1/2023		\$41.00	\$32.94	\$73.94

**BUREAU OF LABOR LAW COMPLIANCE
PREVAILING WAGES PROJECT RATES**

Project: 24-05229 - Building	Effective Date	Expiration Date	Hourly Rate	Fringe Benefits	Total
Sign Makers and Hangars	7/15/2022		\$30.54	\$24.35	\$54.89
Sign Makers and Hangars	7/15/2023		\$31.76	\$24.63	\$56.39
Sprinklerfitters	4/1/2023		\$44.33	\$28.04	\$72.37
Sprinklerfitters	4/1/2024		\$46.45	\$28.62	\$75.07
Steamfitters	6/1/2022		\$42.15	\$27.32	\$69.47
Steamfitters	6/1/2023		\$44.10	\$28.37	\$72.47
Steamfitters	6/1/2024		\$48.15	\$29.57	\$77.72
Stone Masons	12/1/2022		\$38.56	\$23.61	\$62.17
Terrazzo Finisher	12/1/2022		\$36.13	\$18.03	\$54.16
Terrazzo Finisher	6/1/2023		\$39.79	\$18.47	\$58.26
Terrazzo Mechanics	12/1/2022		\$35.49	\$20.32	\$55.81
Terrazzo Mechanics	6/1/2024		\$39.14	\$20.77	\$59.91
Tile Finisher	12/1/2022		\$28.76	\$17.34	\$46.10
Tile Finisher	6/1/2024		\$31.56	\$17.74	\$49.30
Tile Setter	12/1/2022		\$35.64	\$21.81	\$57.45
Tile Setter	6/1/2024		\$38.46	\$22.19	\$60.65
Truckdriver class 1(see notes)	1/1/2023		\$33.18	\$22.21	\$55.39
Truckdriver class 1(see notes)	1/1/2024		\$34.93	\$22.71	\$57.64
Truckdriver class 1(see notes)	1/1/2025		\$36.43	\$23.21	\$59.64
Truckdriver class 1(see notes)	1/1/2026		\$37.93	\$23.71	\$61.64
Truckdriver class 2 (see notes)	1/1/2023		\$33.64	\$22.52	\$56.16
Truckdriver class 2 (see notes)	1/1/2024		\$35.39	\$23.02	\$58.41
Truckdriver class 2 (see notes)	1/1/2025		\$36.89	\$23.52	\$60.41
Truckdriver class 2 (see notes)	1/1/2026		\$38.39	\$24.02	\$62.41
Truckdriver class 3 (see notes)	1/1/2016		\$28.23	\$16.98	\$45.21
Wallcoverer	5/1/2022		\$24.54	\$22.75	\$47.29
Window Film / Tint Installer	10/1/2019		\$25.00	\$2.63	\$27.63

**BUREAU OF LABOR LAW COMPLIANCE
PREVAILING WAGES PROJECT RATES**

Project: 24-05229 - Heavy/Highway	Effective Date	Expiration Date	Hourly Rate	Fringe Benefits	Total
Carpenter	1/1/2023		\$38.60	\$20.59	\$59.19
Carpenter	1/1/2024		\$40.10	\$21.34	\$61.44
Carpenter	1/1/2025		\$41.35	\$22.09	\$63.44
Carpenter	1/1/2026		\$42.60	\$22.84	\$65.44
Carpenter Welder	1/1/2023		\$40.10	\$20.59	\$60.69
Carpenter Welder	1/1/2024		\$41.60	\$21.34	\$62.94
Carpenter Welder	1/1/2025		\$42.85	\$22.09	\$64.94
Carpenter Welder	1/1/2026		\$44.10	\$22.84	\$66.94
Carpenters - Piledriver/Welder	1/1/2023		\$40.63	\$21.22	\$61.85
Carpenters - Piledriver/Welder	1/1/2024		\$42.13	\$21.97	\$64.10
Carpenters - Piledriver/Welder	1/1/2025		\$43.38	\$22.72	\$66.10
Carpenters - Piledriver/Welder	1/1/2026		\$44.63	\$23.47	\$68.10
Cement Finishers	1/1/2023		\$34.14	\$25.05	\$59.19
Cement Finishers	1/1/2024		\$35.14	\$26.30	\$61.44
Cement Finishers	1/1/2025		\$35.94	\$27.50	\$63.44
Cement Masons	1/1/2020		\$32.84	\$21.10	\$53.94
Electric Lineman	8/29/2022		\$62.66	\$28.08	\$90.74
Electric Lineman	9/4/2023		\$64.68	\$29.01	\$93.69
Electric Lineman	1/1/2024		\$64.46	\$29.23	\$93.69
Iron Workers (Bridge, Structural Steel, Ornamental, Precast, Reinforcing)	6/1/2023		\$33.57	\$32.68	\$66.25
Laborers (Class 01 - See notes)	1/1/2023		\$29.95	\$25.50	\$55.45
Laborers (Class 01 - See notes)	1/1/2024		\$32.20	\$25.50	\$57.70
Laborers (Class 01 - See notes)	1/1/2025		\$33.70	\$26.00	\$59.70
Laborers (Class 01 - See notes)	1/1/2026		\$34.70	\$27.00	\$61.70
Laborers (Class 02 - See notes)	1/1/2023		\$30.11	\$25.50	\$55.61
Laborers (Class 02 - See notes)	1/1/2024		\$32.36	\$25.50	\$57.86
Laborers (Class 02 - See notes)	1/1/2025		\$33.86	\$26.00	\$59.86
Laborers (Class 02 - See notes)	1/1/2026		\$34.86	\$27.00	\$61.86
Laborers (Class 03 - See notes)	1/1/2023		\$30.50	\$25.50	\$56.00
Laborers (Class 03 - See notes)	1/1/2024		\$32.75	\$25.50	\$58.25
Laborers (Class 03 - See notes)	1/1/2025		\$34.25	\$26.00	\$60.25
Laborers (Class 03 - See notes)	1/1/2026		\$35.25	\$27.00	\$62.25
Laborers (Class 04 - See notes)	1/1/2023		\$30.95	\$25.50	\$56.45
Laborers (Class 04 - See notes)	1/1/2024		\$33.20	\$25.50	\$58.70
Laborers (Class 04 - See notes)	1/1/2025		\$34.70	\$26.00	\$60.70
Laborers (Class 04 - See notes)	1/1/2026		\$35.70	\$27.00	\$62.70
Laborers (Class 05 - See notes)	1/1/2023		\$31.36	\$25.50	\$56.86
Laborers (Class 05 - See notes)	1/1/2024		\$33.61	\$25.50	\$59.11
Laborers (Class 05 - See notes)	1/1/2025		\$35.11	\$26.00	\$61.11
Laborers (Class 05 - See notes)	1/1/2026		\$36.11	\$27.00	\$63.11
Laborers (Class 06 - See notes)	1/1/2023		\$28.20	\$25.50	\$53.70
Laborers (Class 06 - See notes)	1/1/2024		\$30.45	\$25.50	\$55.95
Laborers (Class 06 - See notes)	1/1/2025		\$31.95	\$26.00	\$57.95
Laborers (Class 06 - See notes)	1/1/2026		\$32.95	\$27.00	\$59.95

**BUREAU OF LABOR LAW COMPLIANCE
PREVAILING WAGES PROJECT RATES**

Project: 24-05229 - Heavy/Highway	Effective Date	Expiration Date	Hourly Rate	Fringe Benefits	Total
Laborers (Class 07 - See notes)	1/1/2023		\$30.95	\$25.50	\$56.45
Laborers (Class 07 - See notes)	1/1/2024		\$33.20	\$25.50	\$58.70
Laborers (Class 07 - See notes)	1/1/2025		\$34.70	\$26.00	\$60.70
Laborers (Class 07 - See notes)	1/1/2026		\$35.70	\$27.00	\$62.70
Laborers (Class 08 - See notes)	1/1/2023		\$32.45	\$25.50	\$57.95
Laborers (Class 08 - See notes)	1/1/2024		\$34.70	\$25.50	\$60.20
Laborers (Class 08 - See notes)	1/1/2025		\$36.20	\$26.00	\$62.20
Laborers (Class 08 - See notes)	1/1/2026		\$37.20	\$27.00	\$64.20
Millwright	6/1/2023		\$45.50	\$23.72	\$69.22
Millwright	6/1/2024		\$47.59	\$23.72	\$71.31
Millwright	6/1/2025		\$49.72	\$23.72	\$73.44
Operators (Class 01 - see notes)	1/1/2023		\$36.79	\$23.58	\$60.37
Operators (Class 01 - see notes)	1/1/2024		\$38.59	\$24.03	\$62.62
Operators (Class 01 - see notes)	1/1/2025		\$40.39	\$24.23	\$64.62
Operators (Class 02 -see notes)	1/1/2023		\$36.53	\$23.58	\$60.11
Operators (Class 02 -see notes)	1/1/2024		\$38.33	\$24.03	\$62.36
Operators (Class 02 -see notes)	1/1/2025		\$40.13	\$24.23	\$64.36
Operators (Class 03 - See notes)	1/1/2023		\$32.88	\$23.58	\$56.46
Operators (Class 03 - See notes)	1/1/2024		\$34.68	\$24.03	\$58.71
Operators (Class 03 - See notes)	1/1/2025		\$36.48	\$24.23	\$60.71
Operators (Class 04 - See notes)	1/1/2023		\$32.42	\$23.58	\$56.00
Operators (Class 04 - See notes)	1/1/2024		\$34.22	\$24.03	\$58.25
Operators (Class 04 - See notes)	1/1/2025		\$36.02	\$24.23	\$60.25
Operators (Class 05 - See notes)	1/1/2023		\$32.17	\$23.58	\$55.75
Operators (Class 05 - See notes)	1/1/2024		\$33.97	\$24.03	\$58.00
Operators (Class 05 - See notes)	1/1/2025		\$35.77	\$24.23	\$60.00
Operators Class 1-A	1/1/2023		\$39.79	\$23.58	\$63.37
Operators Class 1-A	1/1/2024		\$41.59	\$24.03	\$65.62
Operators Class 1-A	1/1/2025		\$43.39	\$24.23	\$67.62
Operators Class 1-B	1/1/2023		\$38.79	\$23.58	\$62.37
Operators Class 1-B	1/1/2024		\$40.59	\$24.03	\$64.62
Operators Class 1-B	1/1/2025		\$42.39	\$24.23	\$66.62
Painters (Bridges, Stacks, Towers)	5/1/2022		\$26.79	\$22.75	\$49.54
Painters (Bridges, Stacks, Towers)	5/1/2023		\$27.76	\$24.03	\$51.79
Painters (Brush and Roller)(Industrial)	5/1/2022		\$24.79	\$22.75	\$47.54
Painters (Brush and Roller)(Industrial)	5/1/2023		\$25.76	\$24.03	\$49.79
Painters (Spray and Sandblasting)(Industrial)	5/1/2022		\$25.54	\$22.75	\$48.29
Painters (Spray and Sandblasting)(Industrial)	5/1/2023		\$26.51	\$24.03	\$50.54
Pile Driver Divers (Building, Heavy, Highway)	1/1/2023		\$58.70	\$21.22	\$79.92
Pile Driver Divers (Building, Heavy, Highway)	1/1/2024		\$60.95	\$21.97	\$82.92
Pile Driver Divers (Building, Heavy, Highway)	1/1/2025		\$62.82	\$22.72	\$85.54
Pile Driver Divers (Building, Heavy, Highway)	1/1/2026		\$64.70	\$23.47	\$88.17
Piledrivers	1/1/2023		\$39.13	\$21.22	\$60.35
Piledrivers	1/1/2024		\$40.63	\$21.97	\$62.60

**BUREAU OF LABOR LAW COMPLIANCE
PREVAILING WAGES PROJECT RATES**

Project: 24-05229 - Heavy/Highway	Effective Date	Expiration Date	Hourly Rate	Fringe Benefits	Total
Piledrivers	1/1/2025		\$41.88	\$22.72	\$64.60
Piledrivers	1/1/2026		\$43.13	\$23.47	\$66.60
Steamfitters (Heavy and Highway - Gas Distribution)	5/1/2022		\$48.43	\$40.28	\$88.71
Truckdriver class 1(see notes)	1/1/2023		\$33.18	\$22.21	\$55.39
Truckdriver class 1(see notes)	1/1/2024		\$34.93	\$22.71	\$57.64
Truckdriver class 1(see notes)	1/1/2025		\$36.43	\$23.21	\$59.64
Truckdriver class 1(see notes)	1/1/2026		\$37.93	\$23.71	\$61.64
Truckdriver class 2 (see notes)	1/1/2023		\$33.64	\$22.52	\$56.16
Truckdriver class 2 (see notes)	1/1/2024		\$35.39	\$23.02	\$58.41
Truckdriver class 2 (see notes)	1/1/2025		\$36.89	\$23.52	\$60.41
Truckdriver class 2 (see notes)	1/1/2026		\$38.39	\$24.02	\$62.41
Truckdriver class 3 (see notes)	1/1/2019		\$29.59	\$19.82	\$49.41